

Introduction

This product is designed for portable or fixed control panels, constructed from aluminum alloy. The panel is equipped with various high-quality switches and operating components, along with optional functions (such as built-in LCD displays), and supports mainstream communication methods. It is suitable for multifunctional operation applications that balance stability and efficiency within a certain spatial range.

1. Mechanical Specifications

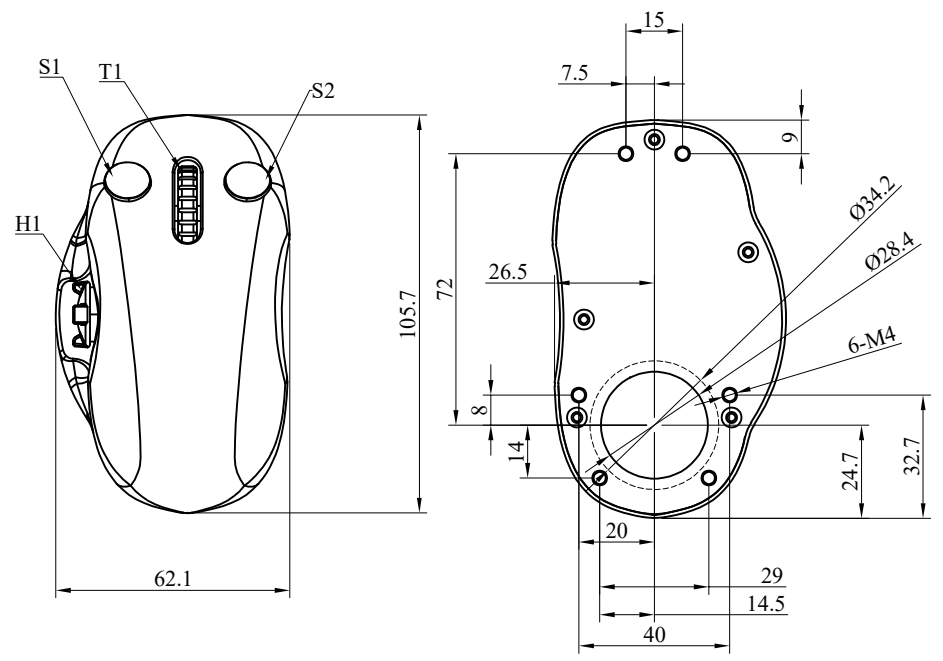
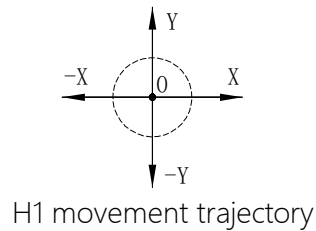
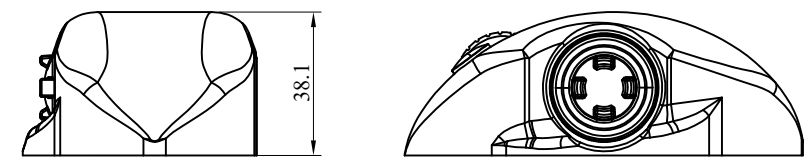
- 1.1 Main Material: Aluminum alloy, frosted black;
- 1.2 Structure Type: Enclosed type, with customizable external shape;
- 1.3 S1, S2: Black self-resetting push-button switch, normally open;
- T1: Roller, aluminum alloy flat black, incremental encoder;
- H1: Dual-axis Hall sensor, Spring self-reset with $18^{\circ}\pm1^{\circ}$ rotation in any direction
- Operating force: 0–3N; Ultimate operating force: 5N;
- 1.4 Weight: approximately 600g;
- 1.5 Mechanical lifespan: 1 million cycles;

2. Electrical Specifications:

- 2.1 Electrical Parameters:
 - Input voltage: +5VDC;
 - USB 2.0 (protocol details attached separately);

3. Environmental Parameters:

- 3.1 Operating Temperature: -40°C to $+70^{\circ}\text{C}$
- 3.2 Storage Temperature: -45°C to $+75^{\circ}\text{C}$
- 3.3 Moisture Resistance: $93\pm3\%$ RH



Model No.:MKF-JS09-MOUSE

Mate Technology Shenzhen Limited www.matend.com									
Draw:	4	2025-01-05	Scale:	1:1	View:				
Design:	3	2025-01-05	Stage		Unit:	mm			
Audit:	1	2025-01-05							
Approve:	1	2025-01-05	Page		1	of		1	