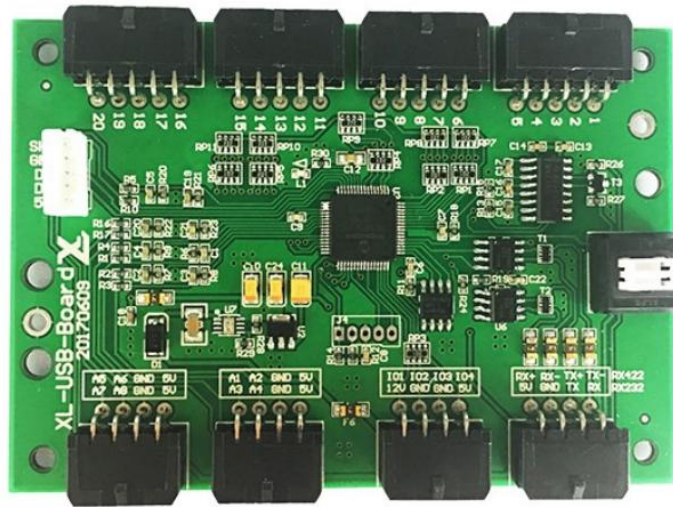


MKF-U107-EB

Mate Emulator Board, USB interface



DESCRIPTION

Emulator board, USB interface, driver-free, can be recognized as a joystick in the computer, support Microsoft operating system, Linux operating system. It is suitable for simulator console, ground station, man-machine input panel interface, etc.

SPECIFICATION

Analog input (joystick)	8-axis, 10-bit precision, (0-5V signal input)
IO input (button)	20 external buttons
Programmable IO (indicator output)	4 output ports (for LED indicator)
Communication interface	USB2.0, RS232, RX422 or RS485
USB driver	USB HID protocol, no driver, only supports "joystick, mouse, keyboard" and combination mode
Dimensions	(W)100X(L)70X(H)12
Positioning hole size	(W)90X(L)60, through hole \varnothing 3.0mm x 4

TECHNICAL DRAWINGS

