

MKF-TS04-V2 SERIES JOYSTICKS

Mate Joystick, Single axis joysticks, Panel Mounted



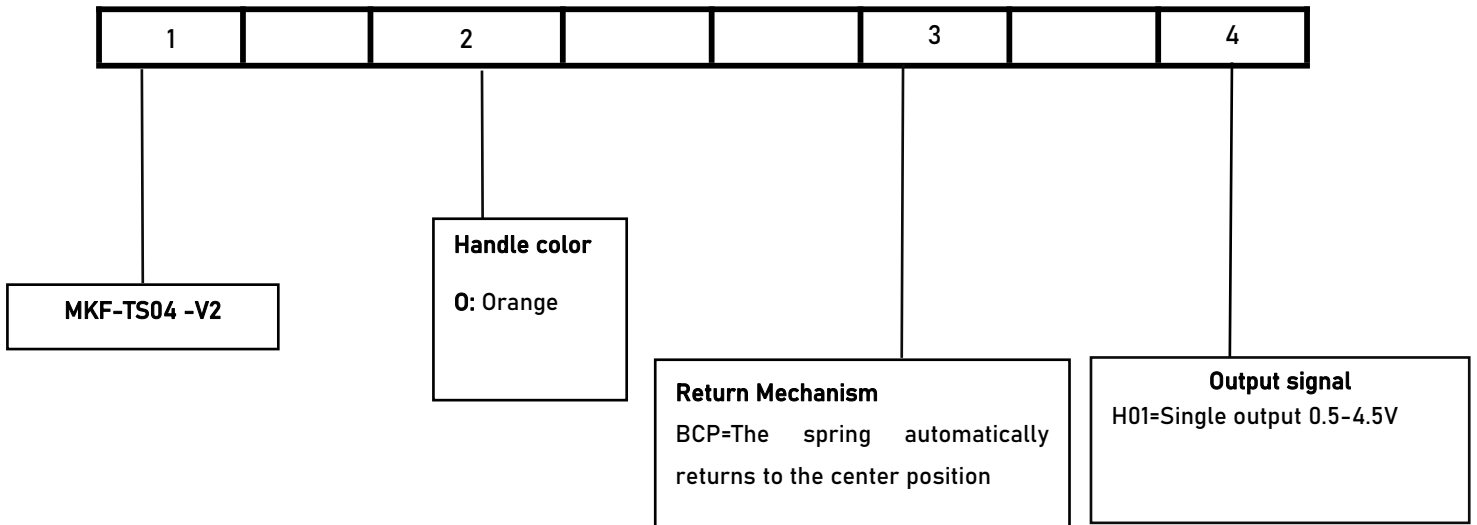
DESCRIPTION

MKF-TS04-V2 series single axis joystick. Using Hall sensor imported from Germany, linear compensation in full temperature range, multi-point linearity correction, non-contact between moving parts and sensor, long life. Suitable for construction machinery, hydraulic control and other fields.

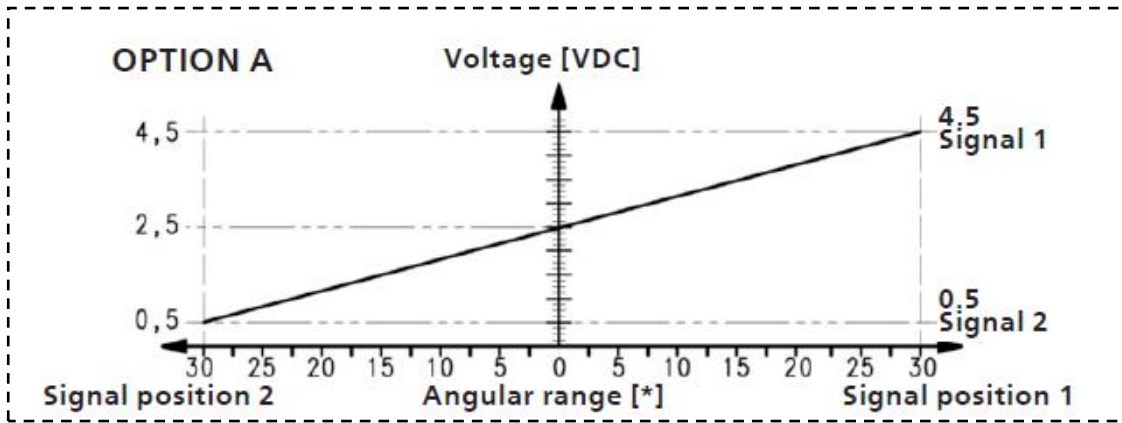
SPECIFICATION

Lever Action	Spring return
Lever Mechanical Angle	±35°
Sensor Type	Hall effect
Signal Output	Analog voltage 0.5-4.5V
Power Supply	DC5V 12MA
Operating Cycles	> 10 Million Cycles
Operating Temperature	-40°C~+70°C
Storage Temperature	-50°C~+80°C

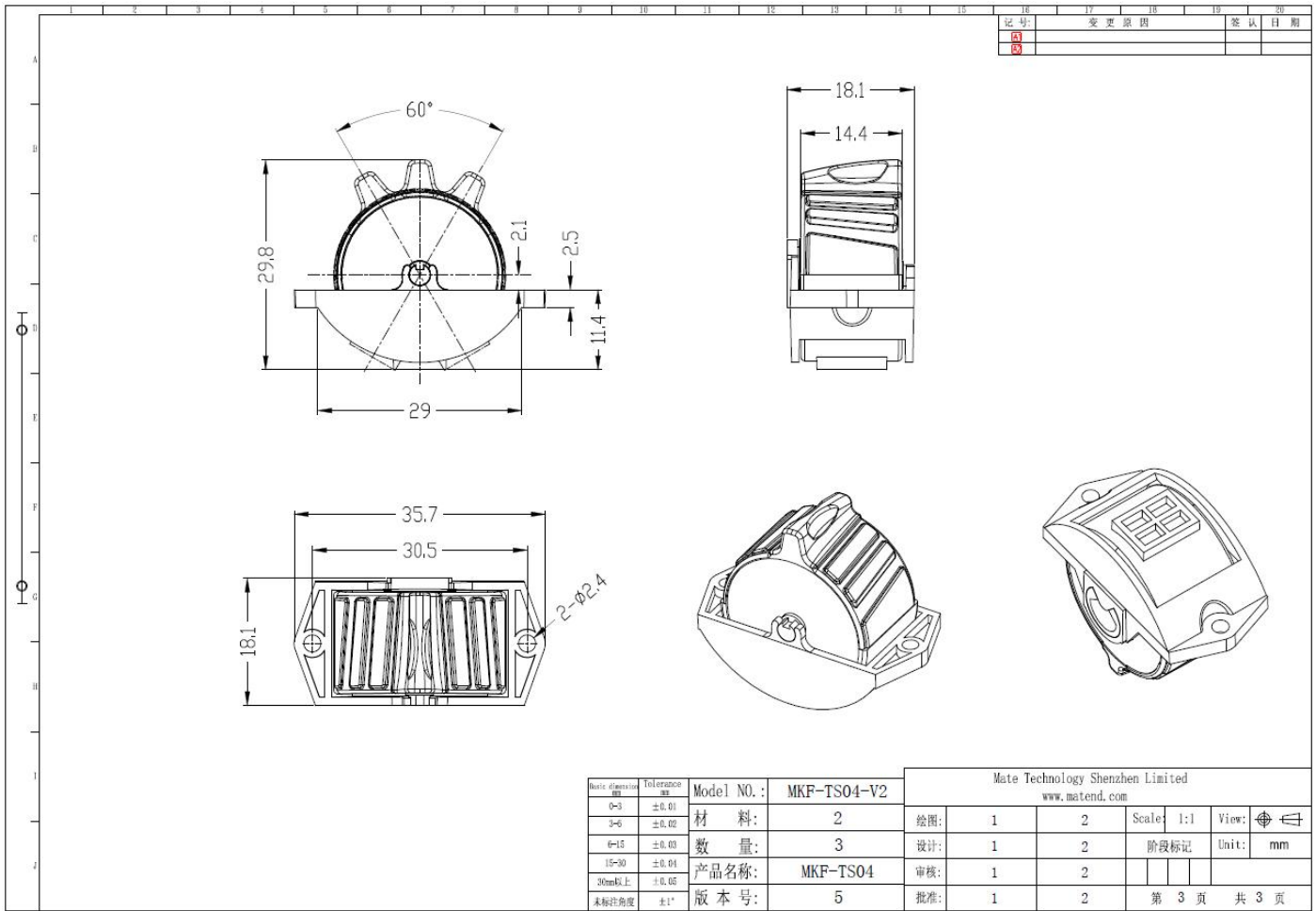
PRODUCT CONFIGURATION



Single signal output curve (Curve 1)



MECHANICAL DRAWING



16	17	18	19	20
记号:	变更原因	验证日期		
5				

Basic dimension 基本尺寸	Tolerance 公差	Model NO.:	Mate Technology Shenzhen Limited www.matend.com							
0-3	±0.01	材料:	2	绘图:	1	2	Scale:	1:1	View:	☉ ↯
3-6	±0.02	数量:	3	设计:	1	2	阶段标记	Unit:	mm	
6-15	±0.03	产品名称:	MKF-TS04	审核:	1	2				
15-30	±0.04	版本号:	5	批准:	1	2				
30mm以上	±0.05									
未标注角度	±1°								第 3 页 共 3 页	