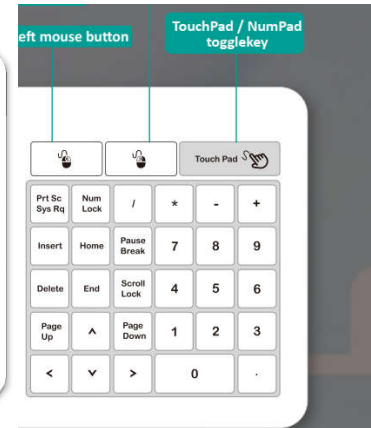
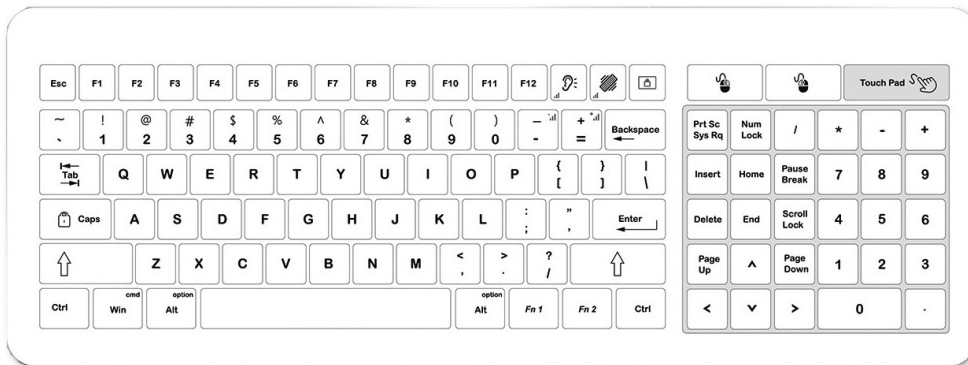


MKA-436-N

Mate Keyboard, Glass, IP67, toggle key to touchpad, Desktop version



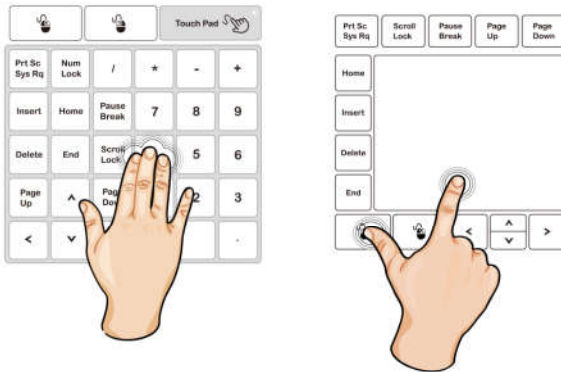
FEATURES

- Fully sealed up to IP67 and ergonomic design for comfort typing experiences
- Washable by any hospital grade disinfectants
- Logo/ Custom layout available on request
- Latex gloves friendly, work with wet fingers as well
- Lock key to disable keyboard while cleaning
- Toggle key change numeric pad to touchpad as mouse
- Movable office desktop type
- USB interface, plug and play

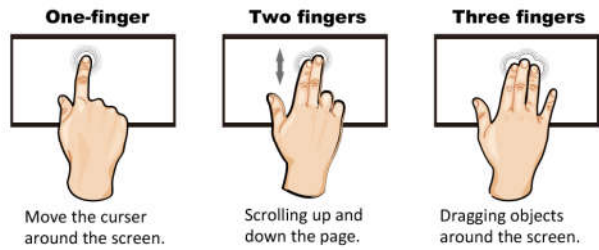
SPECIFICATION

Material	Tempered Glass + Rugged ABS case
Glass capacity	Rigidity>6H, intensity: CS≥450mpa, DOL≥8um
Touchpad size	119.0 x 102.0mm
Key size	18.0 x 18.0mm
Interface	USB 2.0
EMC Standard	EN 55032:2015 , EN 55035:2017
Temperature Range	Operating: -20°C to +55°C, Storage: -30°C to +60°C
Compatibility	All Windows, Linux, Mac
Warranty	1 year
Certification	CE/FCC/ RoHS/IP67
Dimensions	436.0 x 160.0 x 20.0mm (L * H * W)
Weight	0.9kg

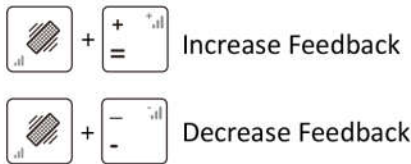
DRAWING



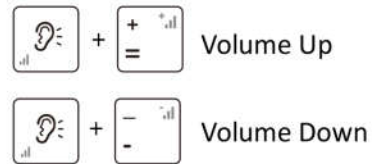
TOUCHPAD GESTURE GUIDE



Adjust haptic feedback



Adjust audible feedback



✓ USB 2.0

