

## MKA-35-NL-MX

Mate Keypad, Metal, 15 keys, Illuminated, Matrix, Panel Mounted



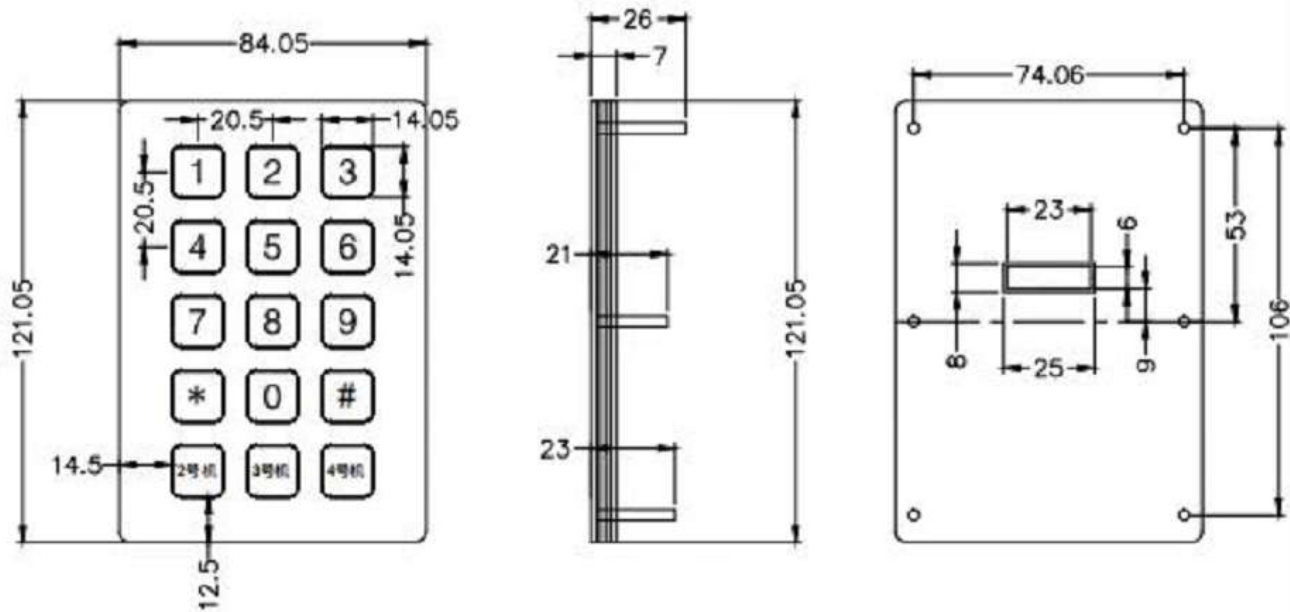
### FEATURES

- High quality SUS 304 stainless steel keypad
- Horizontally brushed surface
- IP65 waterproof grade, resistance in salty or greasy environments
- Built to withstand harsh environments, either indoors or outdoors
- With high contrast backlit (blue) included
- Custom layout without any engineering cost
- Top panel mounted with threaded bolts
- Matrix interface

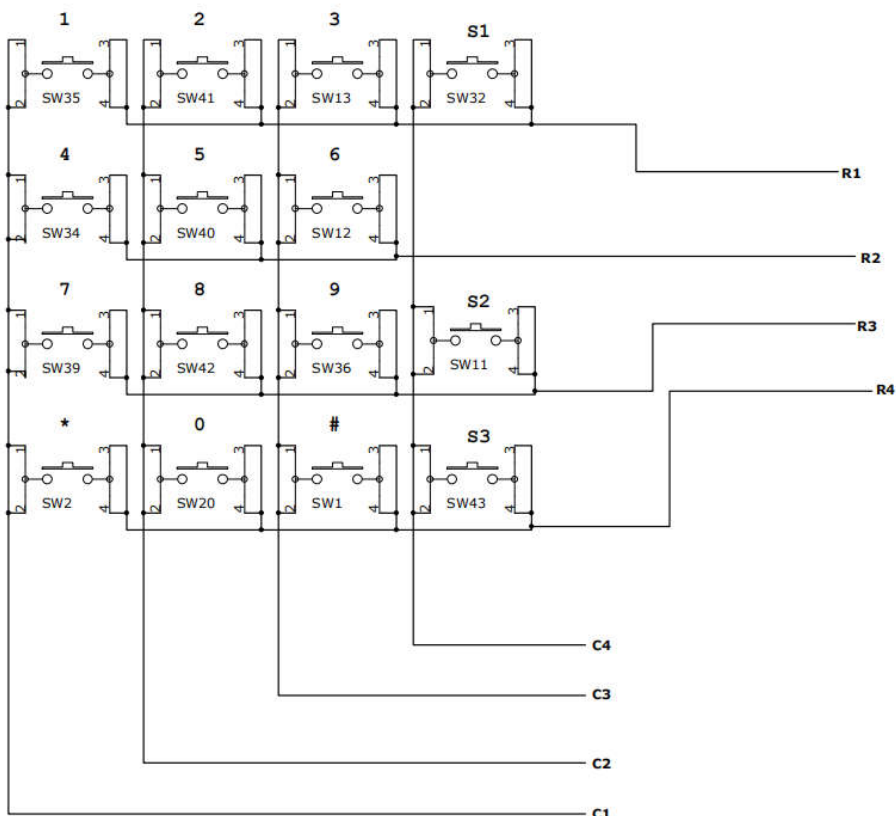
### SPECIFICATION

Number of keys	15
Key Switch	Metal dome switch technology
Switching cycles	more than 5 million actuation
Material	FRONT PANEL: 304 stainless steel    BACK PANEL: 304 stainless steel
Power Supply	5v DC +/-5%
Interface	Matrix interface
EMC Standard	EN 55032:2015 , EN 55035:2017
Temperature Range	Operating: -20°C to +55°C, Storage: -30°C to +60°C
Compatibility	All Windows, Linux, Mac
Warranty	1 year
Certification	CE/FCC/ RoHS/IP65/IK09
Dimensions	84.05 x 121.05 mm (Front panel)
Weight	0.7kg

## MECHANICAL DRAWING



## MATRIX DIAGRAM



KEY\_BOOK  
KEY

1	1	C1
2	2	C2
3	3	R3
4	4	R2
5	5	C3
6	6	R1
7	7	C4
8	8	R4
9	9	LED-
10	10	LED+
11	11	
12	12	
13	13	

